

Fast Lane Institute for Knowledge Transfer GmbH  
Gasstr. 4, Gebäude K, Otto von Bahrenpark  
D-22761 Hamburg  
Telefon: +49 40 253346-10  
Fax: +49 40 235377-20  
E-Mail: [info@flane.de](mailto:info@flane.de)  
Internet: [www.flane.de](http://www.flane.de)

Dear Customers,

We would like to thank you for your registration and we are pleased to welcome you to our training center in Munich.

Enclosed you will find the site plan and directions to our training center in Munich.

**We wish you a pleasant stay!**



## **Fast Lane Institute for Knowledge Transfer GmbH**

Am Söldnermoos 17  
D - 85399 Hallbergmoos  
Tel. Nr.: +49 811 998196-90  
Fax Nr.: +49 811 998196-99  
E-Mail: [info@flane.de](mailto:info@flane.de)  
Internet: [www.flane.de](http://www.flane.de)

## Directions

### **Location:**

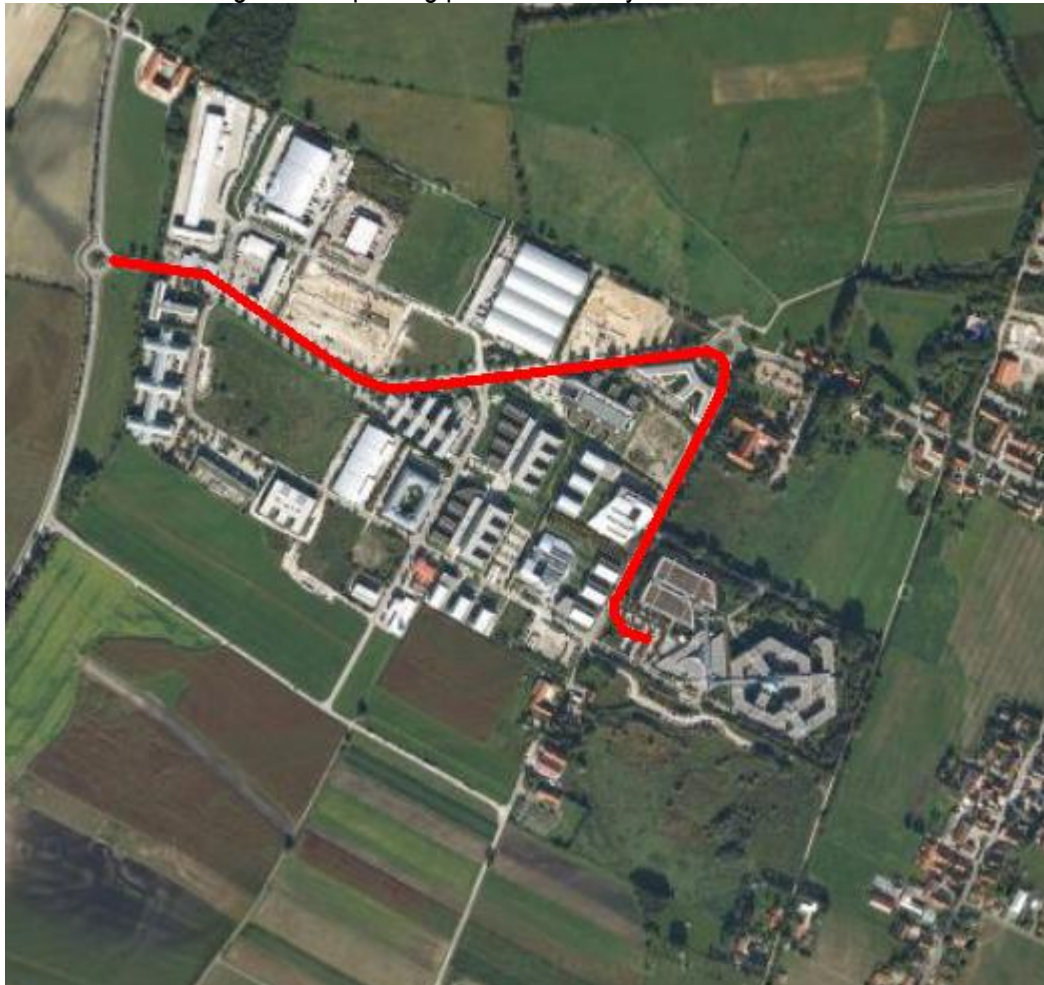
Fast Lane Institute for Knowledge Transfer GmbH is located on the 2<sup>nd</sup> floor inside the AIRPORT BUSINESS CENTRE (ABC), a modern office building and conference room close to Munich Airport and in the catchment area of the economic area of Munich.

### **Arrival by car**

#### **Towards A9 (Munich or Nuremberg)**

At the motorway junction Neufahrn take the Autobahn A29 towards Deggendorf / Flughafen. Please take the exit called Hallbergmoos and turn left at the traffic light. Drive for about 500m and leave the roundabout to the right towards Hallbergmoos. Please follow the course of the road until you reach the second roundabout (about 600m) which you leave at the first exit. After 100m you will pass a few roads to the left hand. Take the **fourth** which is secured with a gate. Enter the Code “**1596**” and **press the key symbol** to open the gate.

If the Fast Lane visitor parking spaces are already occupied please contact our office via **0811 / 99 81 969 0**. We will arrange further parking possibilities for you.



## By public transport

### **S-Bahn and Bus from and to the Airport**

Take the S8 train from the Airport towards the city and exit at **S-Hallbergmoos**. Now you continue by Bus. Bus schedule [S-Bahn Hallbergmoos and ABC Center](#)

This is a Shuttle-Bus which drives between **S-Hallbergmoos** and the **ABC** free of charge. You can recognize it by the „Panavia“ lettering.



No responsibility is taken for the correctness of the details provided

*Please note that only a limited amount of parking spaces is available. We therefore recommend the use of public transport (which is reachable within a 5-minute walk).*



## Hotel Recommendations

### Hotel Mövenpick München-Airport\*\*\*\*

Ludwigstrasse 43  
85399 Hallbergmoos, München-Airport  
Germany

Tel.: +49 811 888-0  
Fax: +49 811 888-444

<http://www.moevenpick-hotels.com>  
[hotel.munich.airport@moevenpick.com](mailto:hotel.munich.airport@moevenpick.com)

**Booking code: PM146A**

SR: 99,00 € incl. breakfast and WLAN  
SR Superior: 109,00 € incl. breakfast and WLAN  
SR at fair times: 137,00 € incl. breakfast and WLAN

For 8,00 € Shuttle service Hotel ← → Airport Munich  
from 5.30 a.m. until 23 p.m.

**Distance to trainings center:**  
By Foot: 6 Minutes

### Hotel Daniel's \*\*\*

Hauptstraße 11  
85399 Hallbergmoos  
Germany

Tel.: +49 811 5512-0  
Fax: +49 811 5512-13

[www.hotel-daniels.de](http://www.hotel-daniels.de)  
[info@hotel-daniels.de](mailto:info@hotel-daniels.de)

**Booking code: Fast Lane**

SR: 89,00 € incl. breakfast  
DR: 109,00 € incl. breakfast

Distance: Hotel- bus station 500m bus stop ABC 300m.

**Distance to trainings center:**  
Car: 7 Minutes

### Ibis München Airport Süd

Ludwigstraße 42  
85399 Hallbergmoos  
Germany

Tel: +49 89 452135-165  
Fax: +49 89 452135-166

[Ha061@accor.com](mailto:Ha061@accor.com)  
[www.ibis.com](http://www.ibis.com)

**Booking code: SCP620307**

73,06 € incl. breakfast

Shuttle service from/to the airport: 9,00 €

**Distance to training center:**  
By foot: 4 minutes

### Hotel und Gasthof Neuwirt

Hauptstr. 51,  
85399 Hallbergmoos

Tel.: +49 811 9986-80  
Fax: +49 811 99868-20

<http://www.neuwirt-hallbergmoos.de>  
[info@neuwirt-hallbergmoos.de](mailto:info@neuwirt-hallbergmoos.de)

SR: 89,00 € incl. breakfast  
DR: 109,00 € incl. breakfast  
SR Souterrain: 59,00 € incl. breakfast

Distance: ca. 4km

**Haus zum Gutenberg**

Hotel Gami  
Tassiloweg 16 -18  
85399 Hallbergmoos

Tel: +49 811 5553-70  
Fax: +49 811 5553-727

[info@haus-zum-gutenberg.de](mailto:info@haus-zum-gutenberg.de)  
[www.haus-zum-gutenberg.de](http://www.haus-zum-gutenberg.de)

57,00 € incl. Breakfast

Distance: ca. 15 minutes  
-free shuttle service to Fast Lane

Please note that during a fair the prices may change.  
All prices incl. VAT.  
If you need further assistance please do not hesitate to call us.