

DIRECTION TO FAST LANE TRAINING CENTRE WALLISELLEN/ZURICH

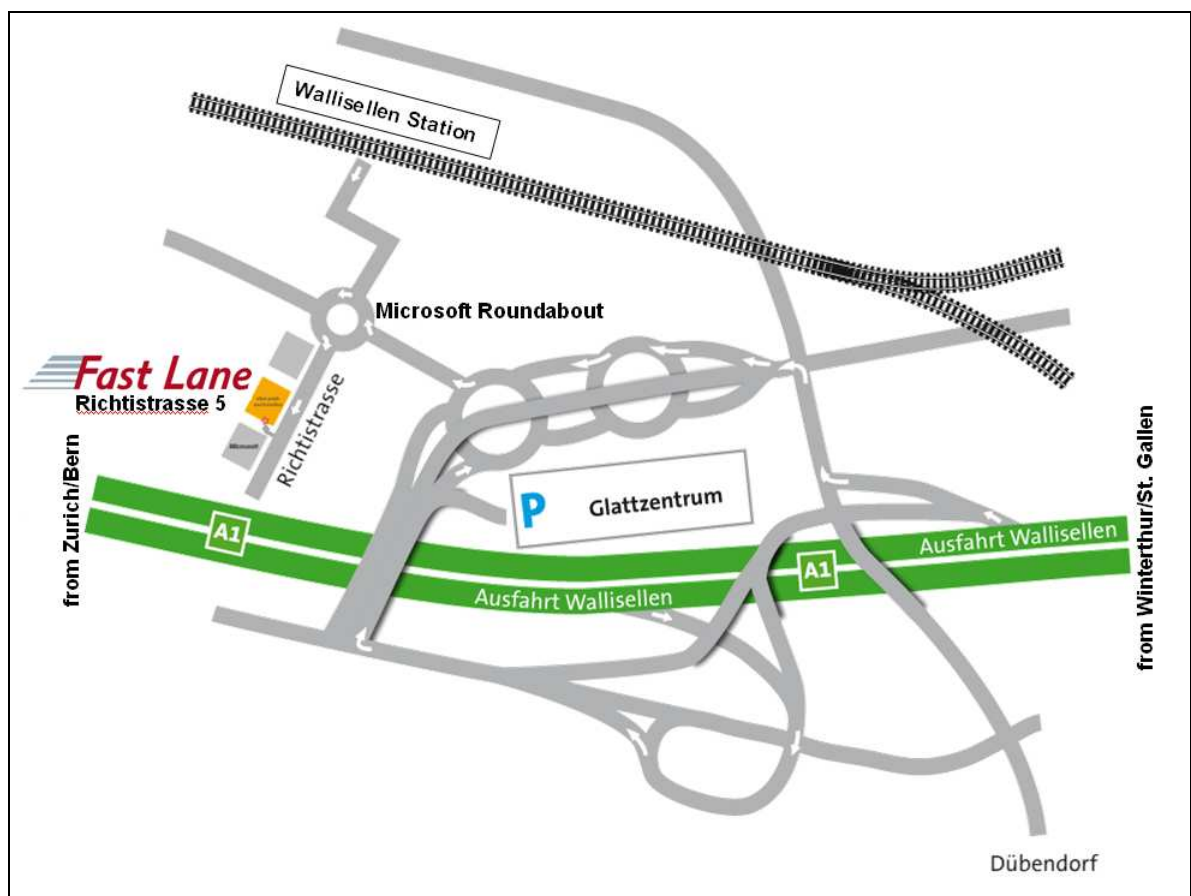
**Fast Lane Institute for Knowledge Transfer (Switzerland) AG
Richtistrasse 5, 8304 Wallisellen (Zurich)**

Phone. No.: +41 44 832 50 80

Fax No.: + 41 44 832 50 85

Internet: www.flane.ch

E-Mail: info@flane.ch



Driving Direction to Fast Lane/Wallisellen ZH:

If you plan to travel by car, please contact us previously via phone +41 (0)44 832 50 80. We will then explain to you how and where you can park your car.

From Zurich:

Highway A1 in direction Winterthur/St. Gallen, take the exit 65 toward "Wallisellen". Follow the Ueberlandstrasse in direction to Zurich until the traffic light before the Möbelhaus Schubiger, turn right to the Shopping Center Glatt (Glattzentrum), take the middle lane to the first roundabout, there take the second exit (Herti), at the next roundabout (Microsoft) take the third exit (Richtistrasse).

From St. Gallen / Winterthur:

Highway A1 in direction Zurich, take the exit "Wallisellen/Dübendorf", turn right at the traffic light, at the second traffic light turn left and take the right lane towards "Glattbrugg-Opfikon", in the next roundabout go straight on, at the next roundabout take the first exit (Herti), in the following roundabout (Microsoft) take the third exit (Richtistrasse).

From Zurich Airport:

Distance from the Airport Zurich to Fast Lane: approx. 8.0 km ~ 10 minutes by car. Take the Autobahn A51 (highway) in direction "St. Gallen/Zürich/Bern/Basel". Keep left and continue in direction "Schaffhausen/St. Gallen/E41". Take the exit 65 toward "Wallisellen/Dübendorf/Zürich-Schwamendingen/". Follow the Ueberlandstrasse in direction Zurich until the traffic light before the Möbelhaus Schubiger, turn right to the Shopping Center Glatt (Glattzentrum), take the middle lane to the first roundabout, there take the second exit (Herti), at the next roundabout (Microsoft) take the third exit (Richtistrasse).

See also Google Maps Route planner: www.flane.ch/en/facility/1

Taxi from the airport to the Fast Lane Training Center: Destination: Wallisellen, Richtistrasse 5

With public transportation to Wallisellen Station:

By Train/S-Bahn (Municipal Railway)/Glattalbahn/Bus => Wallisellen station

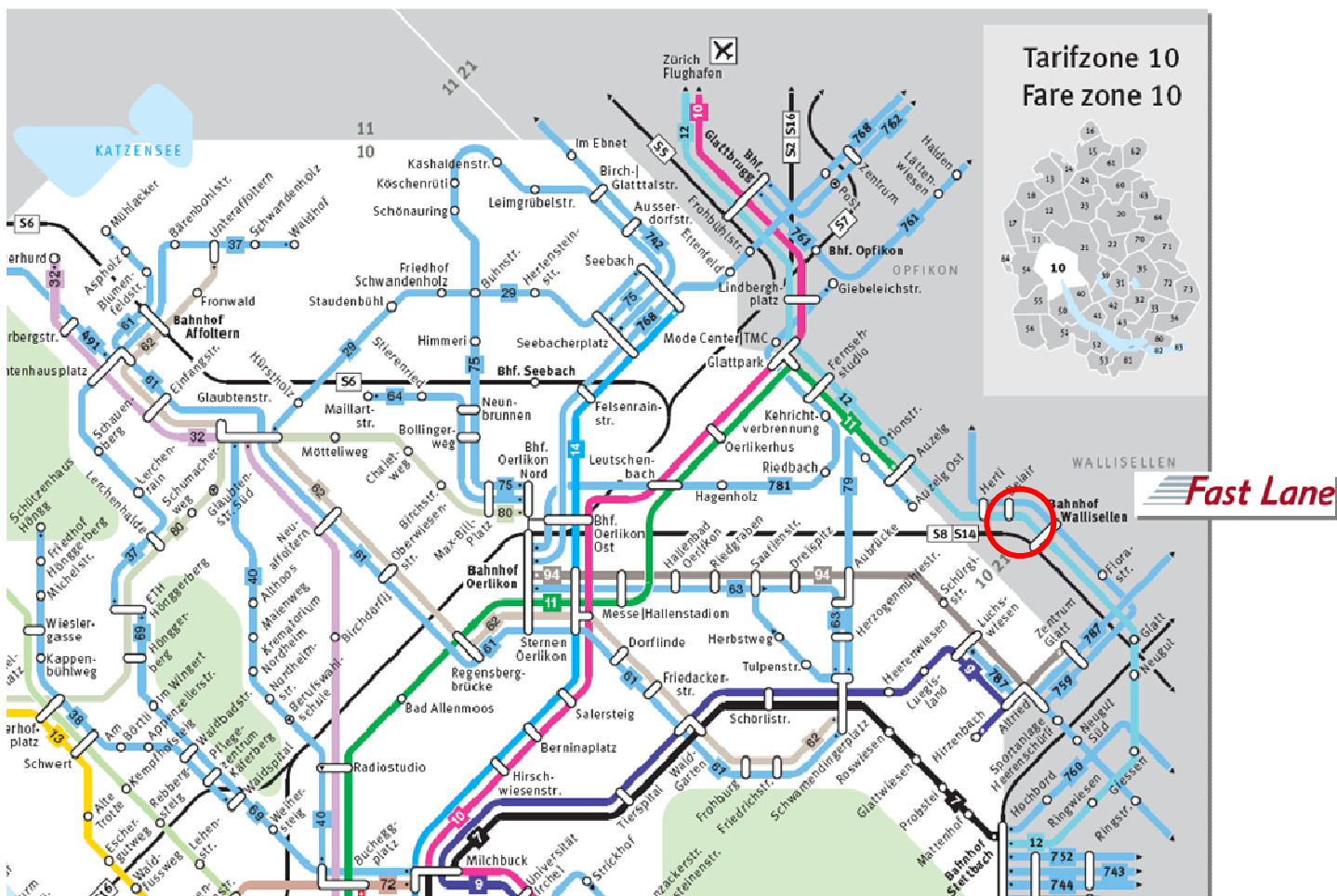
From Zurich-Hauptbahnhof/Main Station (S14 or S8) or Winterthur (S8), exit at **Wallisellen station**

Glattalbahn-Line 12, exit at **Wallisellen station** (departure all 15 minutes)

Bus 759, exit at **Wallisellen station**

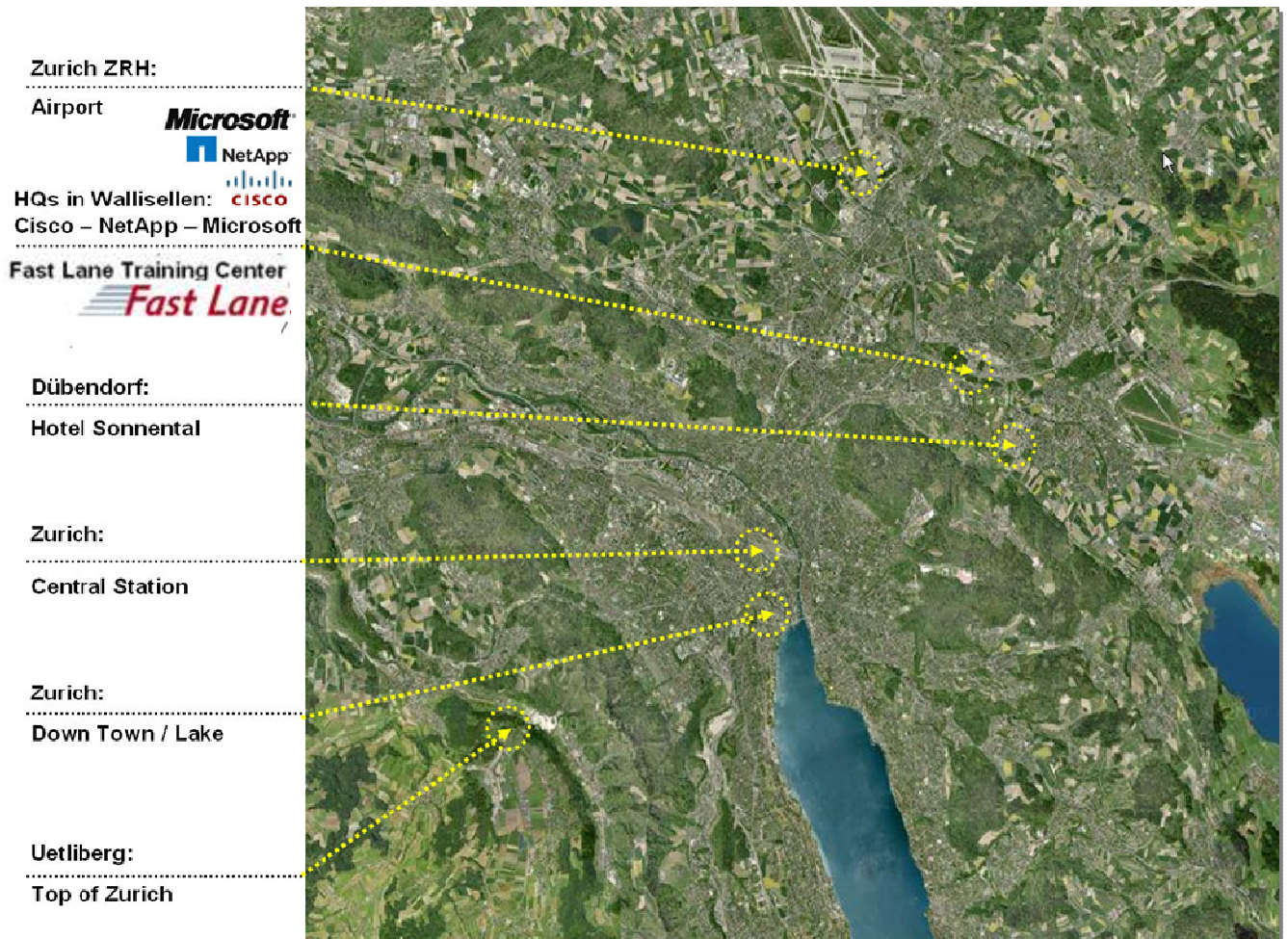
From Wallisellen station: take a walk to Richtistrasse 5, approx. 5 minutes

From the **Airport Zürich**: take the **Glattalbahn-Line 12** to **Wallisellen station** (all 15 minutes)



For more information take a look at SBB Web: <http://www.sbb.ch/en/index.htm>

Map: Zurich / Airport / Fast Lane Training Centre in Wallisellen (Zurich)



☞ If you have any questions, please call us: **FAST LANE +41 (0)44 832 50 80 ☎**